

**DigiPharma
Laboratory**



The Lu Digital Pharmaceuticals (DigiPharma) Laboratory aims to develop and apply state-of-the-art technologies to understand disease pathologies and develop treatment strategies for cancer, infectious disease, and beyond.

<https://www.lu-lab.net/>

Postdoc Positions in Bioengineering/Immunology/Micro-nanotechnologies

The DigiPharma Lab (<https://www.lu-lab.net/>) seeks two postdoctoral fellows to join our group.

We are looking for applicants who are highly motivated, open-minded, creative, intellectually curious, and have a passion for translational medicine. Our research interests lie at the intersection of micro-nanotechnologies, multiomics analysis, and data driven approaches, aiming to develop effective analysis tools and therapeutic strategies for cancer, autoimmune diseases, and infectious diseases.

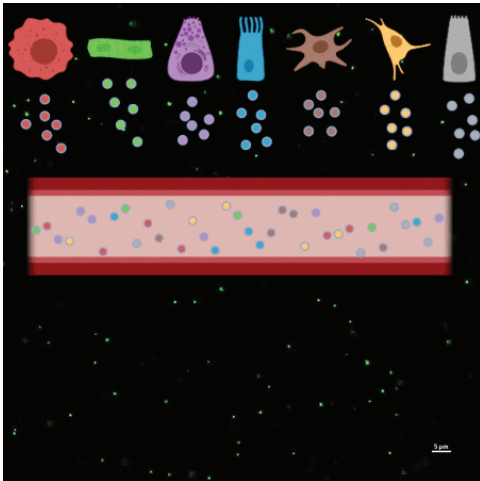
Candidates are expected to have an excellent track record in bioengineering, immunology, micro/nano fabrication, and/or computational biology, with a Ph.D. degree in Immunology, Biological Science, Biochemistry, Engineering, Medicine, Chemistry, Pharmaceutical Science or a closely related discipline. We are particularly interested in candidates experienced with single-cell sequencing.

Candidates are also expected to have the capacity to work on multiple projects, meet deadlines, and communicate effectively with peers and colleagues. The successful candidates will work on (1) innovative methods for single extracellular vesicle analysis, and (2) microfluidics-powered single cell analysis.

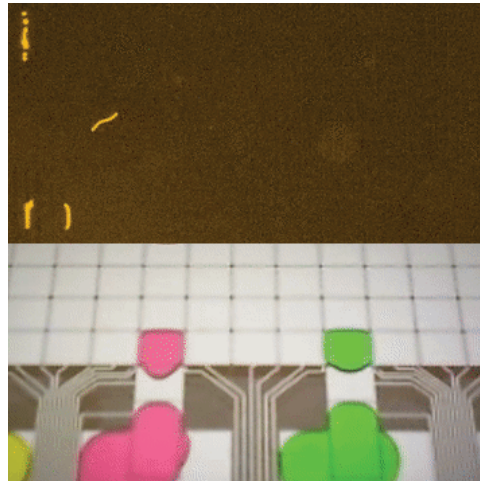
Those interested should contact Prof. Lu (luyuelab@gmail.com, please reference "postdoc application" in the subject line) with a single PDF file containing a cover letter briefly describing research interests and accomplishments, a CV with a complete list of publications and copies of up to three relevant papers, and names of at least three references.

Our Research Focus

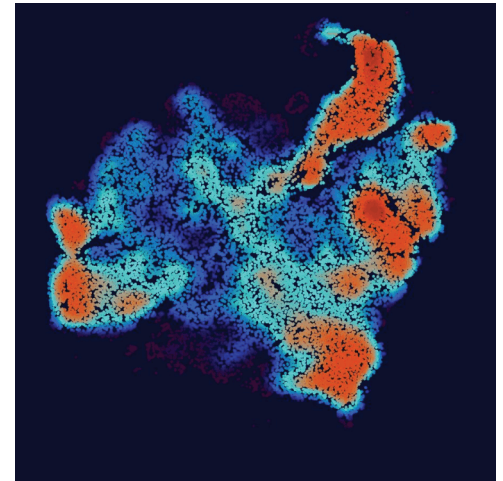
ONE| Single EV analysis



TWO| Health Monitoring Device



THREE| Spatial tissue profiling



Affiliations

Department of
Molecular Pharmaceutics



The Immunology, Inflammation, &
Infectious Disease (3i) Initiative

Address

30 South 2000 East
Room SKH 301
University of Utah
Salt Lake City, Utah
84112 USA

